



REGIONAL SPECIALISED METEOROLOGICAL CENTRE-TROPICAL CYCLONES, NEW DELHI
TROPICAL WEATHER OUTLOOK

DEMS-RSMC SPECIAL TROPICAL CYCLONES NEW DELHI DATED 23.10.2023

FROM: RSMC –TROPICAL CYCLONES, NEW DELHI

TO: STORM WARNING CENTRE, NAYPYI TAW (MYANMAR)
STORM WARNING CENTRE, BANGKOK (THAILAND)
STORM WARNING CENTRE, COLOMBO (SRILANKA)
STORM WARNING CENTRE, DHAKA (BANGLADESH)
STORM WARNING CENTRE, KARACHI (PAKISTAN)
METEOROLOGICAL OFFICE, MALE (MALDIVES)
OMAN METEOROLOGICAL DEPARTMENT, MUSCAT (THROUGH RTH JEDDAH)
YEMEN METEOROLOGICAL SERVICES, REPUBLIC OF YEMEN (THROUGH RTH JEDDAH)
NATIONAL CENTRE FOR METEOROLOGY, UAE (THROUGH RTH JEDDAH)
PRESIDENCY OF METEOROLOGY AND ENVIRONMENT, SAUDI ARABIA (THROUGH RTH JEDDAH)
IRAN METEOROLOGICAL ORGANISATION, (THROUGH RTH JEDDAH)
QATAR METEOROLOGICAL DEPARTMENT (THROUGH RTH JEDDAH)

TROPICAL CYCLONE ADVISORY NO. 18 FOR NORTH INDIAN OCEAN (THE BAY OF BENGAL AND THE ARABIAN SEA) VALID FOR NEXT 120 HOURS ISSUED AT 0630 UTC OF 23.10.2023 BASED ON 0300 UTC OF 23.10.2023.

SUB: (A) EXTREMELY SEVERE CYCLONIC STORM “TEJ” (PRONOUNCED AS TEJ) WEAKENED INTO VERY SEVERE CYCLONIC STORM OVER WESTCENTRAL ARABIAN SEA AND (B) DEEP DEPRESSION OVER WESTCENTRAL BAY OF BENGAL

(A) EXTREMELY SEVERE CYCLONIC STORM “TEJ” (PRONOUNCED AS TEJ) WEAKENED INTO VERY SEVERE CYCLONIC STORM OVER WESTCENTRAL ARABIAN SEA

THE EXTREMELY SEVERE CYCLONIC STORM “TEJ” (PRONOUNCED AS TEJ) OVER WESTCENTRAL ARABIAN SEA CONTINUED TO MOVE NORTHWESTWARDS WITH A SPEED OF 12 KMPH DURING PAST 6 HOURS, WEAKENED INTO A VERY SEVERE CYCLONIC STORM AND LAY CENTERED AT 0300 UTC OF TODAY, THE 23RD OCTOBER OVER WESTCENTRAL ARABIAN SEA, NEAR LATITUDE 14.6°N AND LONGITUDE 53.2°E, ABOUT 230 KM NORTH-NORTHWEST OF SOCOTRA (YEMEN, 41494), 280 KM SOUTH-SOUTHWEST OF SALALAH (OMAN, 41316) AND 200 KM SOUTH-SOUTHEAST OF AL GHAI DAH (YEMEN, 41398).

IT IS VERY LIKELY TO CONTINUE TO MOVE NORTHWESTWARDS AND CROSS YEMEN COAST CLOSE TO AL- GHAI DAH DURING 1800 – 2100 UTC OF 23RD OCTOBER AS A **VERY SEVERE CYCLONIC STORM** WITH WIND SPEED OF 125-135 KMPH GUSTING TO 150 KMPH.

FORECAST TRACK AND INTENSITY ARE GIVEN BELOW:

DATE/TIME(UTC)	POSITION (LAT. °N/ LONG. °E)	MAXIMUM SUSTAINED SURFACE WIND SPEED (KMPH)	CATEGORY OF CYCLONIC DISTURBANCE
23.10.23/0300	14.6/53.2	155-165 GUSTING TO 180	VERY SEVERE CYCLONIC STORM
23.10.23/0600	15.0/52.9	145-155 GUSTING TO 170	VERY SEVERE CYCLONIC STORM
23.10.23/1200	15.3/52.6	135-145 GUSTING TO 160	VERY SEVERE CYCLONIC STORM
23.10.23/1800	15.6/52.3	125-135 GUSTING TO 150	VERY SEVERE CYCLONIC STORM
24.10.23/0000	15.9/51.9	90-100 GUSTING TO 110	SEVERE CYCLONIC STORM
24.10.23/1200	16.2/51.5	45-55 GUSTING TO 65	DEPRESSION

AS PER INSAT 3D IMAGERY, INTENSITY OF THE SYSTEM IS CHARACTERISED AS T 4.0/4.5. SYSTEM SHOWS CENTRAL DENSE OVERCAST PATTERN WITH WELL DEFINED SPIRAL BANDS. THE OUTER SPIRAL BANDS HAVE ENTERED INTO LAND AND HENCE THE LAND INTERACTION HAS COMMENCED. ASSOCIATED BROKEN LOW AND MEDIUM CLOUDS WITH EMBEDDED INTENSE TO VERY INTENSE CONVECTION LAY OVER WESTCENTRAL ARABIAN SEA BETWEEN LATITUDE 13.0°N TO 17.0°N AND LONGITUDE 50.5°E TO 55.5°E. MINIMUM CLOUD TOP TEMPRATURE IS MINUS 82°C. THE SATELLITE IMAGERY SHOWS GRADUAL WEAKENING OF SYSTEM. MULTISATELLITE WINDS INDICATE STRONGER WINDS IN THE NORTHEASTERN SECTOR. TOTAL PRECIPITABLE WATER IMAGERY SHOWS DRY AIR INCURSION IS TAKING PLACE REACHING UPTO THE CORE FROM WESTERN SECTOR.

ASSOCIATED MAXIMUM SUSTAINED WIND SPEED IS 85 KNOTS GUSTING TO 95 KNOTS. THE ESTIMATED CENTRAL PRESSURE IS 972 HPA.

STORM SURGE GUIDANCE FOR YEMEN COAST:

STORM SURGE OF ABOUT 2 METER HEIGHT ABOVE THE ASTRONOMICAL TIDE IS LIKELY TO INUNDATE LOW LYING AREAS BETWEEN AL GHAYDAH AND AL FAYDAMI NEAR THE LANDFALL POINT AT THE TIME OF LANDFALL.

SEA CONDITION:

- **SOUTHWEST ARABIAN SEA:**
VERY ROUGH TO ROUGH SEA CONDITIONS, PREVAILING OVER THE REGION IS LIKELY TO IMPROVE FURTHER FROM 1200 UTC OF 23RD OCTOBER.
- **WESTCENTRAL ARABIAN SEA:**
PHENOMENAL SEA CONDITION IS PREVAILING AND WILL CONTINUE TILL 1800 UTC OF 23RD OCTOBER. IT WOULD IMPROVE GRADUALLY THEREAFTER BECOMING **HIGH TO VERY ROUGH** BY 0000 UTC OF 24TH AND ROUGH TO VERY ROUGH BY 1200 UTC OF 24TH OCTOBER. THEREAFTER, IT WOULD IMPROVE GRADUALLY.

(B) DEEP DEPRESSION OVER WESTCENTRAL BAY OF BENGAL

THE DEEP DEPRESSION OVER WESTCENTRAL BAY OF BENGAL MOVED NORTHEASTWARDS WITH A SPEED OF 13 KMPH DURING PAST 6 HOURS AND LAY CENTERED AT 0300 UTC OF TODAY, THE 23RD OCTOBER OVER THE SAME REGION, NEAR LATITUDE 17.0°N AND LONGITUDE 86.8°E, ABOUT 360 KM SOUTH OF PARADIP (ODISHA, 42976), 510 KM SOUTH-SOUTHWEST OF DIGHA (WEST BENGAL, 42901) AND 660 KM SOUTH-SOUTHWEST OF KHEPUPARA (BANGLADESH, 41984).

IT IS LIKELY TO INTENSIFY INTO A **CYCLONIC STORM** DURING NEXT 6 HOURS. IT IS VERY LIKELY TO MOVE NEARLY NORTH-NORTHEASTWARDS AND CROSS BANGLADESH COAST BETWEEN KHEPUPARA AND CHITTAGONG AROUND 1200 UTC OF 25TH OCTOBER AS A **DEEP DEPRESSION**.

FORECAST TRACK AND INTENSITY ARE GIVEN BELOW:

DATE/TIME(UTC)	POSITION LAT. °N/ LONG. °E	MAXIMUM SUSTAINED SURFACE WIND SPEED (KMPH)	CATEGORY OF CYCLONIC DISTURBANCE
23.10.23/0300	17.0/86.8	55-65 gusting to 75	Deep Depression
23.10.23/0600	17.5/87.0	55-65 gusting to 75	Deep Depression
23.10.23/1200	18.2/87.3	60-70 gusting to 80	Cyclonic Storm
23.10.23/1800	18.8/87.7	70-80 gusting to 90	Cyclonic Storm
24.10.23/0000	19.3/88.2	80-90 gusting to 100	Cyclonic Storm
24.10.23/1200	20.2/89.1	70-80 gusting to 90	Cyclonic Storm
25.10.23/0000	21.1/89.8	55-65 gusting to 75	Deep Depression
25.10.23/1200	21.9/90.3	50-60 gusting to 70	Deep Depression
26.10.23/0000	22.8/90.7	25-35 gusting to 45	Well Marked Low

AS PER INSAT 3D IMAGERY, INTENSITY OF THE SYSTEM IS CHARACTERISED AS T 2.0. SHEAR PATTERN IS SEEN IN CLOUD IMAGERY.

CLOUDS ARE SHEARED IN NORTHEAST SECTOR. BANDING FEATURES ARE APPEARING IN CLOUD IMAGERY ALONGWITH FURTHER INCREASE IN CONVECTIVE CLOUDS IN CORE AREA, INDICATING FURTHER INTENSIFICATION OF THE SYSTEM.

ASSOCIATED SCATTERED TO BROKEN LOW AND MEDIUM CLOUDS WITH EMBEDDED INTENSE TO VERY INTENSE CONVECTION LAY OVER CENTRAL AND ADJOINING NORTH BAY OF BENGAL BETWEEN LATITUDE 15.0°N TO 21.0°N AND LONGITUDE 84.5°E TO 92.0°E. MINIMUM CLOUD TOP TEMPERATURE IS MINUS 88°C. MULTISATELLITE WINDS INDICATE STRONGER WINDS IN EASTERN SECTOR. TOTAL PRECIPITABLE WATER IMAGERY INDICATES WARM MOIST AIR INCURSION INTO THE SYSTEM CORE.

ASSOCIATED MAXIMUM SUSTAINED WIND SPEED IS 30 KNOTS GUSTING TO 40 KNOTS. THE ESTIMATED CENTRAL PRESSURE IS 1002 HPA.

WIND GUIDANCE (WARNING MAP ENCLOSED):

- **WESTCENTRAL BAY OF BENGAL: SQUALLY WIND SPEED REACHING 50-60 KMPH GUSTING TO 70 KMPH IS PREVAILING AND LIKELY TO INCREASE BECOMING 55-65 KMPH GUSTING TO 75 KMPH FROM 1200 UTC OF 23RD TILL 0000 UTC OF 24TH OCTOBER. IT IS**

LIKELY TO DECREASE GRADUALLY FROM 0600 UTC OF 24TH BECOMING **SQUALLY WIND** SPEED REACHING **40-50 KMPH GUSTING 60 KMPH** BY 1200 UTC OF 24TH.

- **ADJOINING EASTCENTRAL BAY OF BENGAL: SQUALLY WIND** SPEED REACHING **45-55 KMPH GUSTING TO 65 KMPH** IS LIKELY TO INCREASE GRADUALLY BECOMING **50-60 KMPH GUSTING TO 70 KMPH** ON 24TH AND DECREASE FROM 25TH ONWARDS.
- **NORTH BAY OF BENGAL:**
SQUALLY WIND SPEED REACHING **40-50 KMPH GUSTING TO 60 KMPH** IS PREVAILING AND LIKELY TO BECOME **50-60 KMPH GUSTING TO 70 KMPH** FROM 1200 UTC OF TODAY. IT WOULD BECOME **GALE WIND** SPEED REACHING **60-70 KMPH GUSTING TO 80 KMPH** FROM 0000 UTC OF 24TH OCTOBER AND **80-90 KMPH GUSTING 100 KMPH** DURING 0000 – 0600 UTC OF 24TH. IT WOULD DECREASE GRADUALLY THEREAFTER.
- **ALONG & OFF ODISHA, WEST BENGAL, BANGLADESH AND NORTH MYANMAR COASTS:**
SQUALLY WIND SPEED REACHING **40-50 KMPH GUSTING TO 60 KMPH** IS LIKELY FROM 1200 UTC OF 23RD TO 24TH ALONG & OFF ODISHA COAST. **SQUALLY WIND** SPEED REACHING **40-50 KMPH GUSTING TO 60 KMPH** IS LIKELY TO COMMENCE ALONG & OFF WEST BENGAL, BANGLADESH AND NORTH MYANMAR COASTS FROM 0000 UTC OF 24TH. IT WOULD GRADUALLY INCREASE BECOMING **55-65 KMPH GUSTING TO 75 KMPH** ALONG & OFF BANGLADESH COAST, **50-60 KMPH GUSTING TO 70 KMPH** ALONG & OFF NORTH MYANMAR COAST AND **45-55 KMPH GUSTING TO 65** ALONG & OFF WEST BENGAL COAST ON 25TH OCTOBER.
- **MIZORAM, TRIPURA, SOUTH ASSAM AND MANIPUR:**
SQUALLY WIND SPEED REACHING **40-50 KMPH GUSTING TO 60 KMPH** IS LIKELY TO PREVAIL OVER MIZORAM AND TRIPURA AND STRONG WIND SPEED REACHING **30-40 KMPH GUSTING TO 50 KMPH** OVER SOUTH ASSAM & MANIPUR ON 25TH OCTOBER.

STORM SURGE GUIDANCE FOR BANGLADESH COAST:

STORM SURGE OF ABOUT 1.0-1.5 METRE HEIGHT ABOVE THE ASTRONOMICAL TIDE IS LIKELY TO INUNDATE LOW LYING AREAS BETWEEN KHEPUPARA AND CHITTAGONG AROUND THE TIME OF LANDFALL.

SEA CONDITION:

- **WESTCENTRAL BAY OF BENGAL: ROUGH TO VERY ROUGH SEA CONDITION** IS PREVAILING AND WILL CONTINUE TILL 25TH OCTOBER. IT IS LIKELY TO IMPROVE GRADUALLY THEREAFTER.
- **ADJOINING EASTCENTRAL BAY OF BENGAL: MODERATE TO ROUGH SEA CONDITION** IS PREVAILING AND LIKELY TILL 24TH OCTOBER AND **ROUGH TO VERY ROUGH** ON 25TH OCTOBER. IT IS LIKELY TO IMPROVE GRADUALLY THEREAFTER.
- **NORTH BAY OF BENGAL:**
ROUGH SEA CONDITION IS LIKELY ON 23RD AND **VERY ROUGH TO HIGH** ON 24TH AND **VERY ROUGH** ON 25TH OCTOBER.
- **ALONG & OFF ODISHA, WEST BENGAL, BANGLADESH AND NORTH MYANMAR COASTS:**
ROUGH SEA CONDITION IS LIKELY ON 23RD AND **ROUGH TO VERY ROUGH** ON 24TH AND 25TH OCTOBER.

REMARKS:

ARABIAN SEA:

MADDEN JULIAN OSCILLATION INDEX IS IN PHASE 8 WITH AMPLITUDE LESS THAN 1. IT WOULD CONTINUE IN SAME PHASE DURING NEXT 3 DAYS. SEA SURFACE TEMPERATURE IS 27-28°C OVER WESTCENTRAL ARABIAN SEA. THE TROPICAL CYCLONE HEAT POTENTIAL IS AROUND 20-30 KJ/CM² OVER WESTCENTRAL ARABIAN SEA NEAR THE SYSTEM LOCATION AND ALSO ALONG & OFF OMAN-YEMEN

COASTS. THE LOW LEVEL POSITIVE VORTICITY IS AROUND $200 \times 10^{-6} \text{S}^{-1}$ TO THE SOUTH OF THE SYSTEM CENTER WITH VERTICAL EXTENSION UPTO 200 HPA LEVEL. THE POSITIVE LOW LEVEL CONVERGENCE IS ABOUT $30 \times 10^{-5} \text{S}^{-1}$ TO THE SOUTHWEST OF SYSTEM CENTER. POSITIVE UPPER LEVEL DIVERGENCE IS ABOUT $30 \times 10^{-5} \text{S}^{-1}$ TO THE SOUTHWEST OF SYSTEM CENTRE. WIND SHEAR IS LOW TO MODERATE (10-15 KNOTS) OVER SYSTEM AREA AND ALONG THE EXPECTED TRACK.

EXISTING FEATURES INDICATE THAT THE SYSTEM HAS ENTERED OVER COLDER SEA, AN AREA OF LOWER OCEAN THERMAL ENERGY AND IS EXPERIENCING DRY COLD AIR INCURSION INTO THE CORE FROM ARABIAN PENINSULAR REGION. UNDER SUCH ENVIRONMENTAL CONDITONS, THE SYSTEM HAS WEAKENED GRADUALLY AND IS LIKELY TO WEAKEN FURTHER BEFORE LANDFALL.

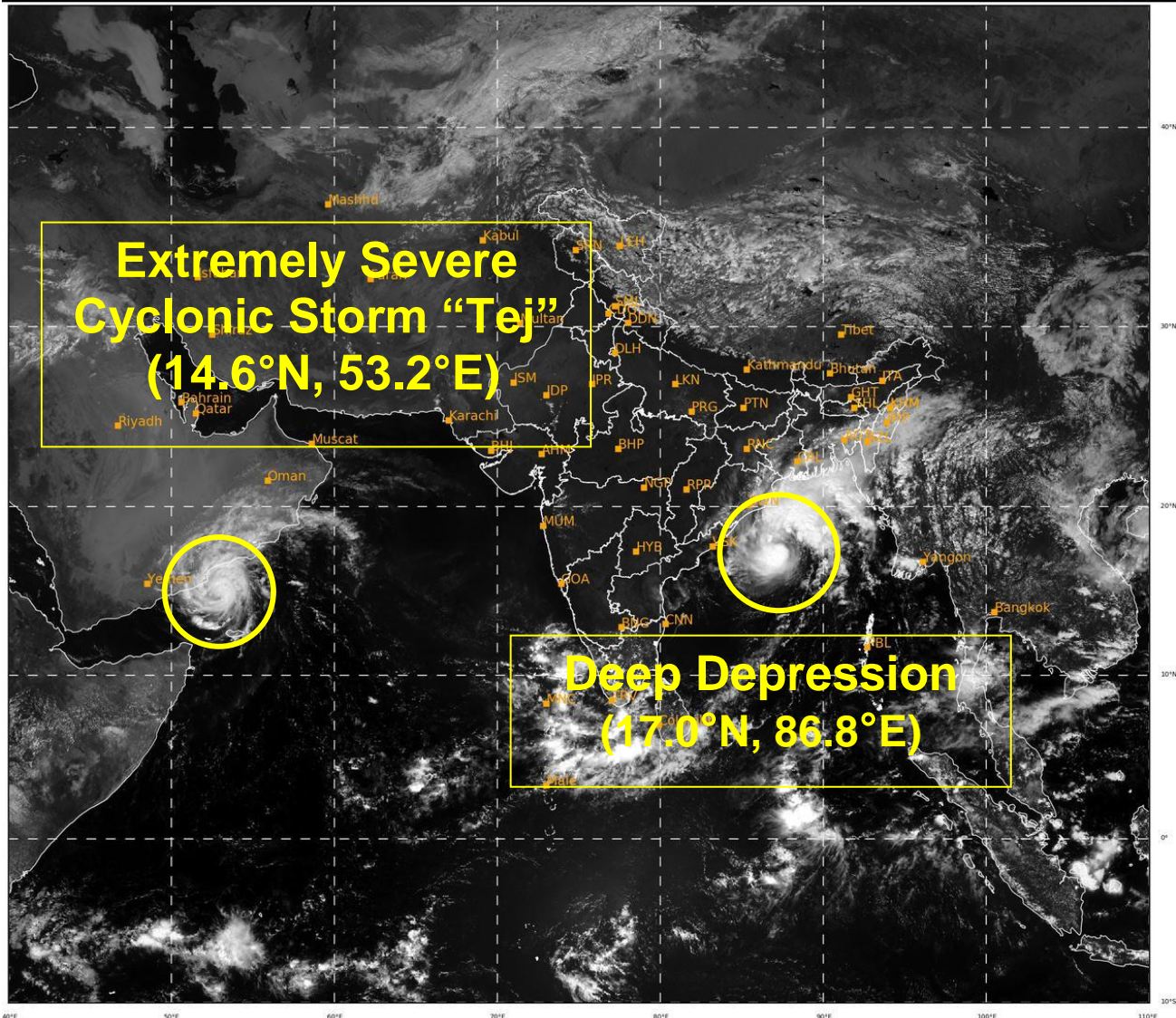
IN VIEW OF ABOVE, THE VERY SEVERE CYCLONIC STORM "TEJ" (PRONOUNCED AS TEJ) IS VERY LIKELY TO MOVE NORTHWESTWARDS AND CROSS YEMEN COAST CLOSE TO AL GHAIHAH (YEMEN) DURING 1800 – 2100 UTC OF 23RD OCTOBER AS A VERY SEVERE CYCLONIC STORM WITH WIND SPEED OF 125-135 KMPH GUSTING TO 150 KMPH (70 KNOTS GUSTING 80 KNOTS).

BAY OF BENGAL:

MODELS ARE IN AGREEMENT THAT THE DEEP DEPRESSION WOULD CROSS BANGLADESH COAST. MOST OF THE MODELS ARE INDICATING FURTHER INTENSIFICATION OF SYSTEM INTO CYCLONIC STORM AROUND 1200 UTC OF 23RD OCTOBER 2023.

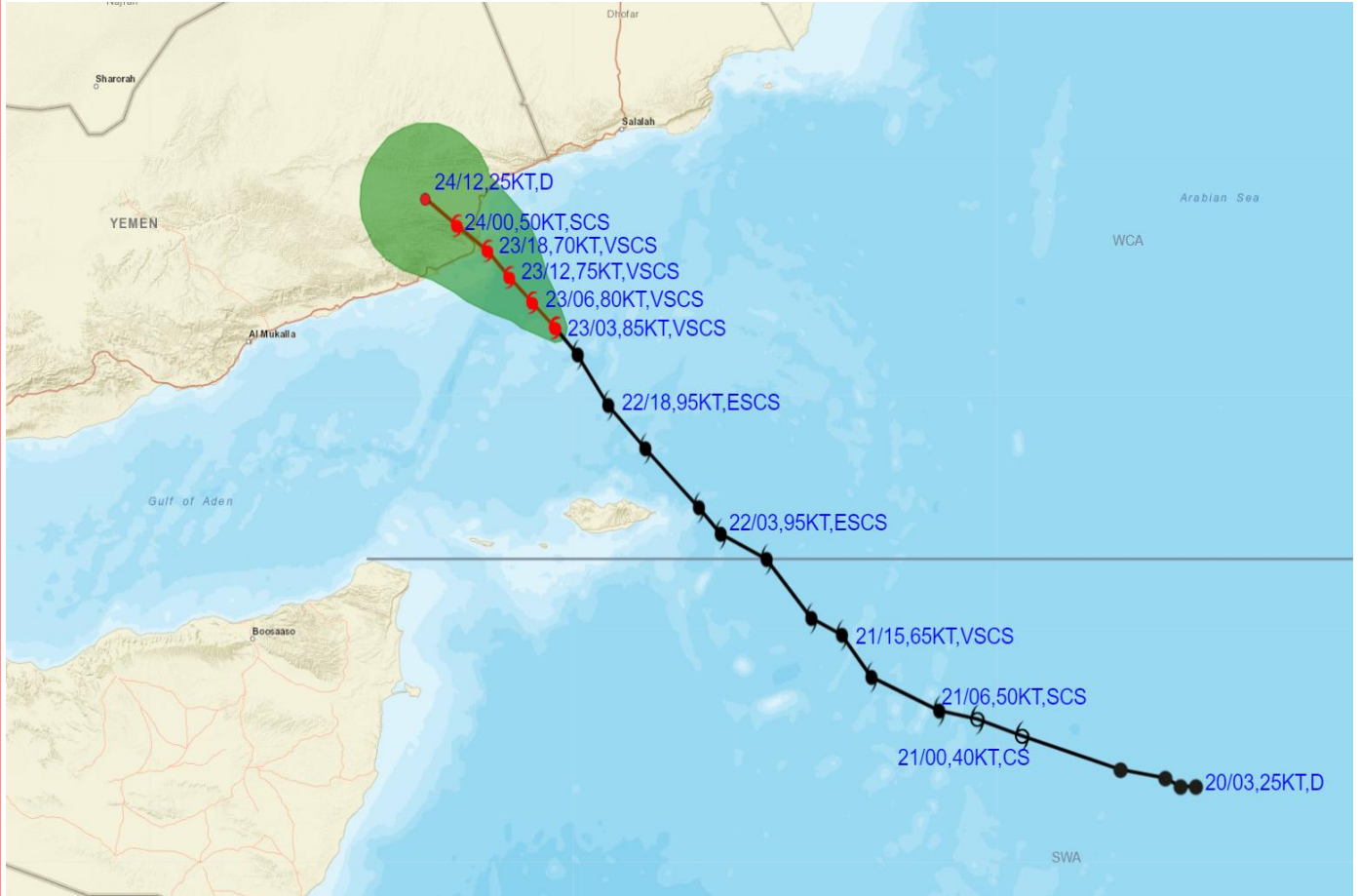
CONSIDERING ALL THESE, THE DEEP DEPRESSION OVER WESTCENTRAL BAY OF BENGAL IS VERY LIKELY TO INTENSIFY INTO A **CYCLONIC STORM** DURING NEXT 6 HOURS. IT WILL INTENSIFY FURTHER AND PEAK INTENSITY (45 KNOTS GUSTING TO 55 KNOTS) WILL OCCUR AROUND 0000 UTC OF 24TH. THEREAFTER, IT IS EXPECTED TO WEAKEN SLIGHTLY WHILE MOVING TOWARDS BANGLADESH COAST. IT IS LIKELY TO WEAKEN UNDER THE INFLUENCE OF HIGH VERTICAL WIND SHEAR IN ASSOCIATION WITH THE UPPER AIR TROUGH IN WESTERLY WITH EMBEDDED JET STREAM OVER THE REGION. IT IS VERY LIKELY TO MOVE NEARLY NORTH-NORTHEASTWARDS AND CROSS BANGLADESH COAST BETWEEN KHEPUPARA AND CHITTAGONG AROUND 1200 UTC OF 25TH OCTOBER AS A **DEEP DEPRESSION** WITH WIND SPEED OF 55-65 GUSTING TO 75 KMPH (30 GUSTING TO 40 KNOTS).

(M . SHARMA)
SCIENTIST-D
RSMC, NEW DELHI





OBSERVED AND FORECAST TRACK ALONGWITH CONE OF UNCERTAINTY OF VERY SEVERE CYCLONIC STORM “TEJ” OVER WESTCENTRAL ARABIAN SEA BASED ON 0300 UTC (0830 IST) OF 23RD OCTOBER 2023.



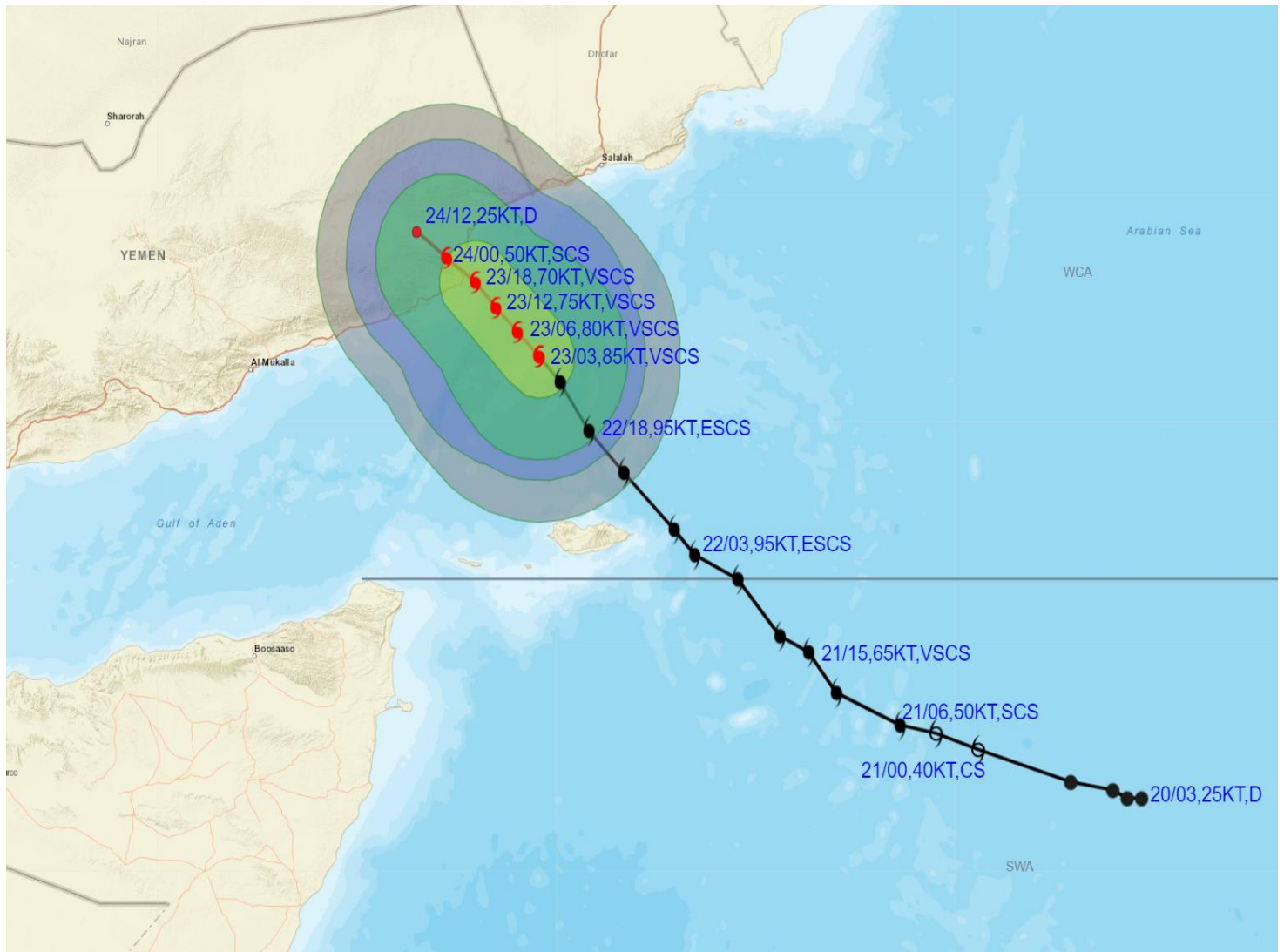
DATE/TIME IN UTC
 IST=UTC + 0530
 L: LOW PRESSURE AREA
 WML: WELL MARKED LOW PRESSURE AREA
 D: DEPRESSION (17-27 KT)
 DD: DEEP DEPRESSION (28-33 KT)
 CS: CYCLONIC STORM (34-47 KT)
 SCS: SEVERE CYCLONIC STORM (48-63KT)
 VSCS: VERY SEVERE CYCLONIC STORM (64-89 KT)
 ESCS: EXTREMELY SEVERE CYCLONIC STORM (90-119 KT)
 SuCS: SUPER CYCLONIC STORM (≥ 120 KT)

- LESS THAN 34 KT
- 34-47 KT
- ≥ 48 KT
- OBSERVED TRACK
- FORECAST TRACK
- CONE OF UNCERTAINTY

Forecast	DISTANCE(KM) AND DIRECTION FROM STATIONS		
	SOCOTRA	SALALAH	AL-GHAIDAH
Date and Time			
24.10.23/0000	420, NNW	270, WSW	30, SW



OBSERVED AND FORECAST TRACK ALONGWITH QUADRANT WIND DISTRIBUTION OF VERY SEVERE CYCLONIC STORM "TEJ" OVER WESTCENTRAL ARABIAN SEA BASED ON 0300 UTC (0830 IST) OF 23RD OCTOBER 2023.



DATE/TIME IN UTC
 IST=UTC + 0530
 L: LOW PRESSURE AREA
 WML: WELL MARKED LOW PRESSURE AREA
 D: DEPRESSION (17-27 KT)
 DD: DEEP DEPRESSION (28-33 KT)
 CS: CYCLONIC STORM (34-47 KT)
 SCS: SEVERE CYCLONIC STORM (48-63KT)
 VSCS: VERY SEVERE CYCLONIC STORM (64-89 KT)
 ESCS: EXTREMELY SEVERE CYCLONIC STORM (90-119 KT)
 SuCS: SUPER CYCLONIC STORM (≥ 120 KT)

● LESS THAN 34 KT
 ○ 34-47 KT
 ● ≥ 48 KT
 — OBSERVED TRACK
 — FORECAST TRACK
 ● CONE OF UNCERTAINTY
 AREA OF MAXIMUM SUSTAINED WIND SPEED:
 ■ 28-33 KT (52-61 KMPH)
 ■ 34-49 KT (62-91 KMPH)
 ■ 50-63 KT (92-117 KMPH)
 ■ ≥ 64 (≥ 118 KMPH)

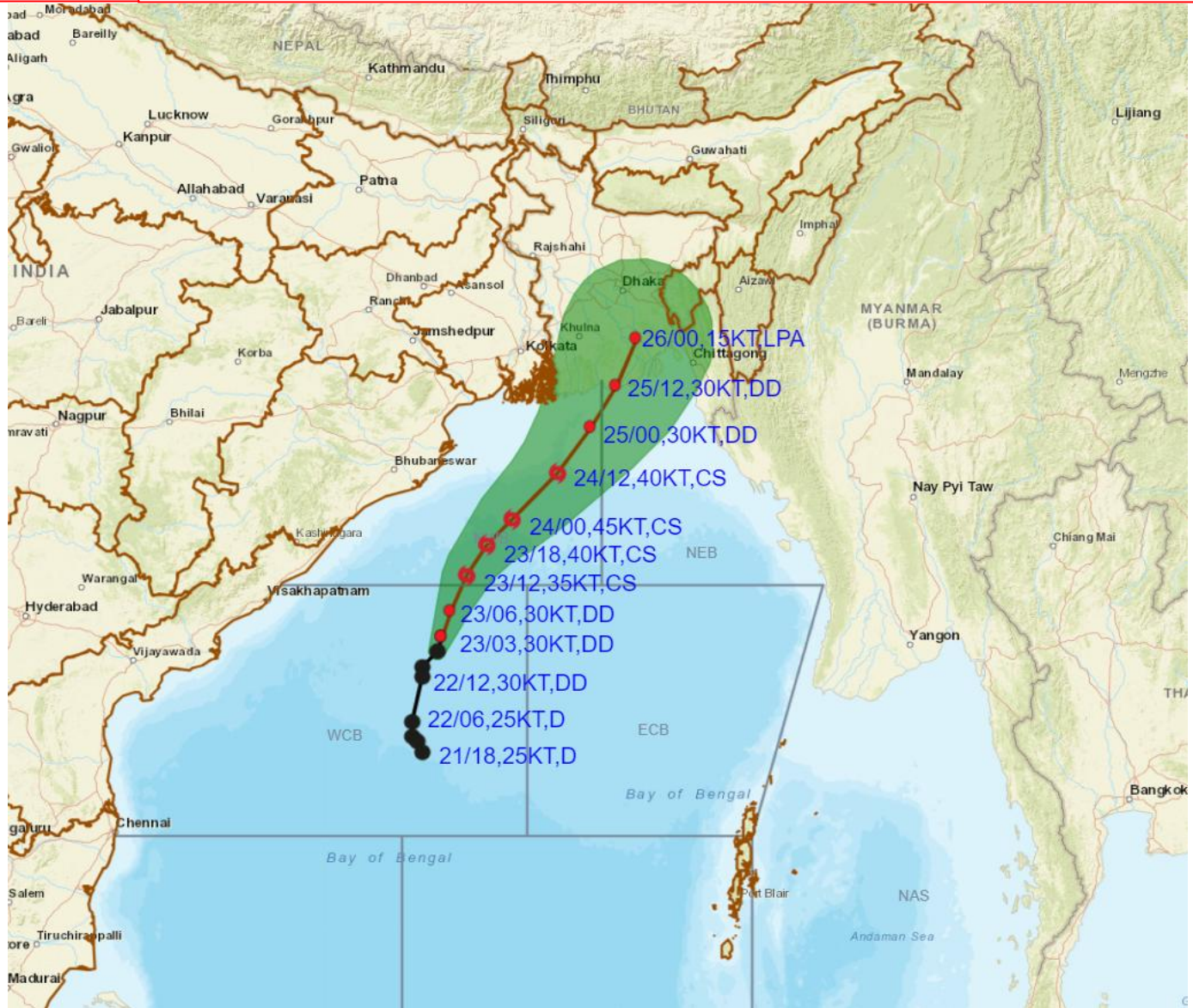
IMPACT OVER THE SEA

MSW (knot/kmph)	Impact	Action
28-33 (52-61)	Very rough seas	Total suspension of fishing operations
34-49 (62-91)	High to very high seas	Total suspension of fishing operations
50-63 (92-117)	Very high seas	Total suspension of fishing operations
≥ 64 (≥ 118)	Phenomenal	Total suspension of fishing operations

Cloud distribution: (a) Isolated: <25%, Scattered:25-50%, Broken: 51-75%, Solid:>75%, Convection Intensity: (a) Weak: Cloud Top Temperature (CTT) >-25°C, (b) Moderate: CTT: - 25°C to -40°C, (c) Intense: CTT: - 41°C to -70°C and (d) Very Intense: : Less than -70°C
 PROBABILITY OF CYCLOGENESIS (FORMATION OF DEPRESSION):NIL: 0%, LOW: 1-33%, , MODERATE: 34-66% AND HIGH: 67-100%
 This is a guidance Bulletin for WMO/ESCAP Panel Member countries. Visit respective National websites for Country specific Bulletins



OBSERVED AND FORECAST TRACK ALONGWITH CONE OF UNCERTAINTY OF DEEP DEPRESSION OVER WESTCENTRAL BAY OF BENGAL BASED ON 0300 UTC (0830 IST) OF 23RD OCTOBER 2023.



DATE/TIME IN UTC

IST=UTC + 0530

L: LOW PRESSURE AREA

WML: WELL MARKED LOW PRESSURE AREA

D: DEPRESSION (17-27 KT)

DD: DEEP DEPRESSION (28-33 KT)

CS: CYCLONIC STORM (34-47 KT)

SCS: SEVERE CYCLONIC STORM (48-63KT)

VSCS: VERY SEVERE CYCLONIC STORM (64-89 KT)

ESCS: EXTREMELY SEVERE CYCLONIC STORM (90-119 KT)

SuCS: SUPER CYCLONIC STORM (≥ 120 KT)

LESS THAN 34 KT

34-47 KT

≥ 48 KT

OBSERVED TRACK

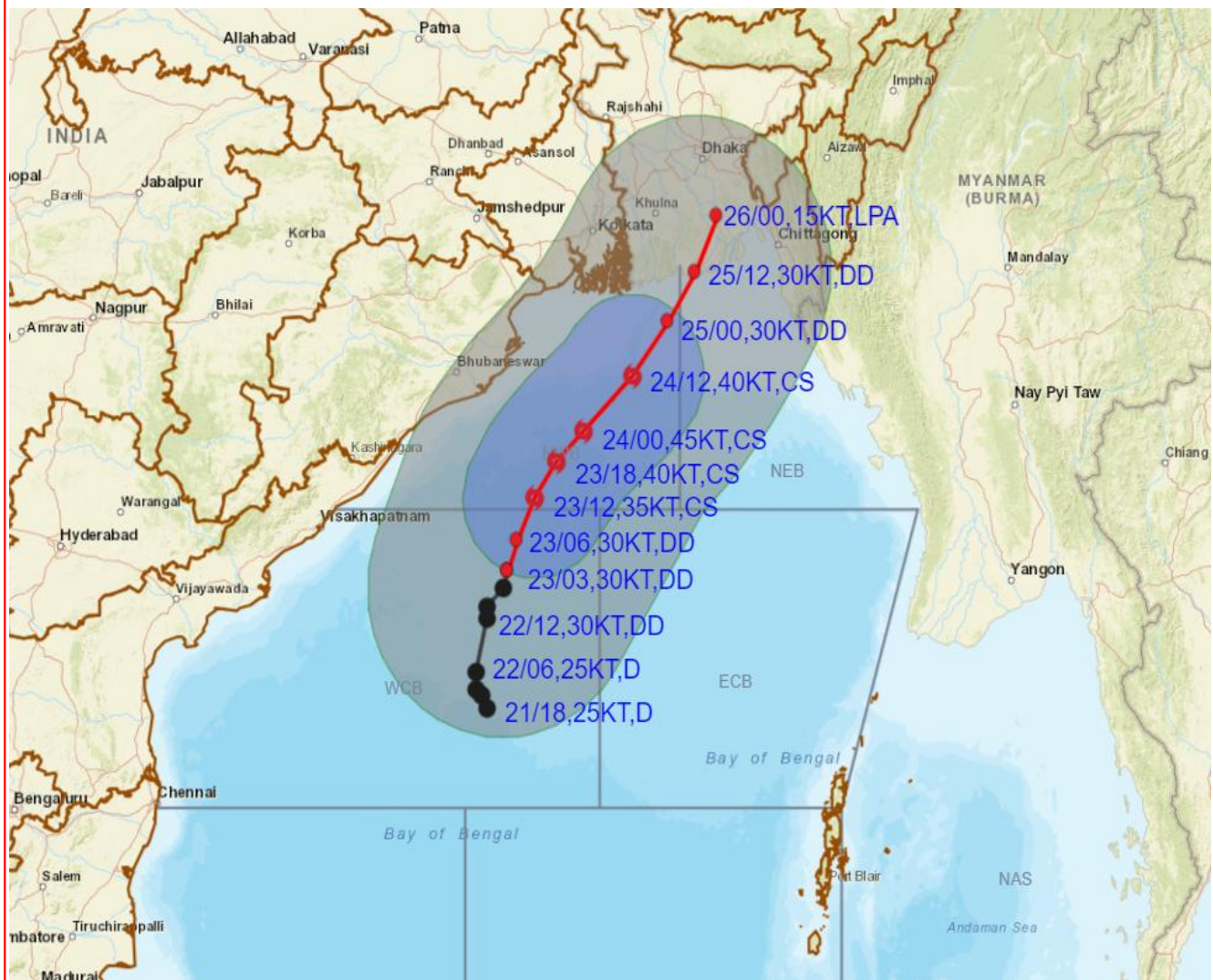
FORECAST TRACK

CONE OF UNCERTAINTY

Cloud distribution: (a) Isolated: <25%, Scattered:25-50%, Broken: 51-75%, Solid:>75%, Convection Intensity: (a) Weak: Cloud Top Temperature (CTT) >-25°C, (b) Moderate: CTT: - 25°C to -40°C, (c) Intense: CTT: - 41°C to -70°C and (d) Very Intense: : Less than -70°C
PROBABILITY OF CYCLOGENESIS (FORMATION OF DEPRESSION):NIL: 0%, LOW: 1-33%, , MODERATE: 34-66% AND HIGH: 67-100%
 This is a guidance Bulletin for WMO/ESCAP Panel Member countries. Visit respective National websites for Country specific Bulletins



OBSERVED AND FORECAST TRACK ALONGWITH QUADRANT WIND DISTRIBUTION OF DEEP DEPRESSION OVER WESTCENTRAL BAY OF BENGAL BASED ON 0300 UTC (0830 IST) OF 23RD OCTOBER 2023.



DATE/TIME IN UTC
IST=UTC + 0530
L: LOW PRESSURE AREA
WML: WELL MARKED LOW PRESSURE AREA
D: DEPRESSION (17-27 KT)
DD: DEEP DEPRESSION (28-33 KT)
CS: CYCLONIC STORM (34.47 KT)
SCS: SEVERE CYCLONIC STORM (48-63KT)
VSCS: VERY SEVERE CYCLONIC STORM (64-89 KT)
ESCS: EXTREMELY SEVERE CYCLONIC STORM (90-119 KT)
SuCS: SUPER CYCLONIC STORM (≥ 120 KT)

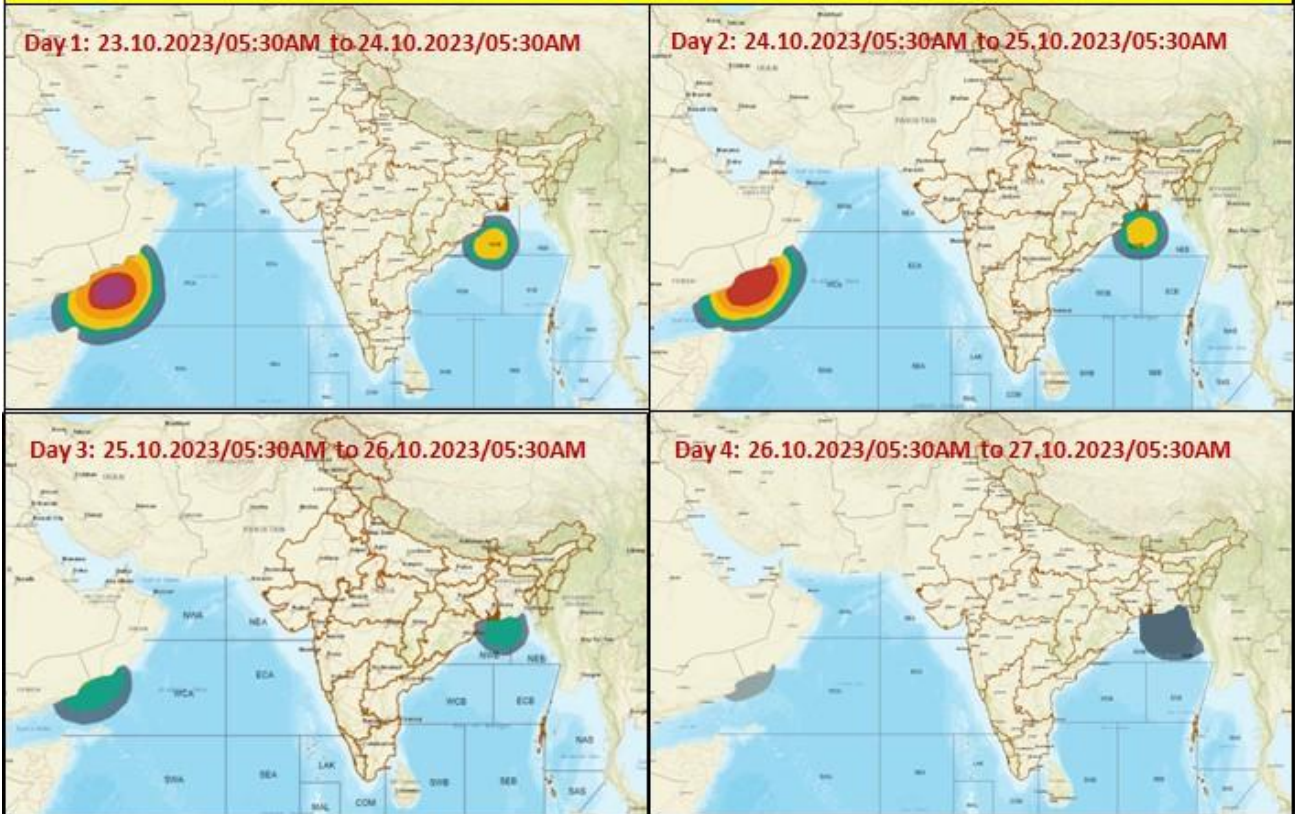
● LESS THAN 34 KT
 ○ 34-47 KT
 ⊙ ≥ 48 KT
 — OBSERVED TRACK
 — FORECAST TRACK
 ● CONE OF UNCERTAINTY
AREA OF MAXIMUM SUSTAINED WIND SPEED:
 ■ 28-33 KT (52-61 KMPH)
 ■ 34-49 KT (62-91 KMPH)
 ■ 50-63 KT (92-117 KMPH)
 ■ ≥ 64 KT (≥118 KMPH)

IMPACT OVER THE SEA

MSW (knot/kmph)	Impact	Action
28-33 (52-61)	Very rough seas	Total suspension of fishing operations
34-49 (62-91)	High to very high seas	Total suspension of fishing operations
50-63 (92-117)	Very high seas	Total suspension of fishing operations
≥ 64 (≥118)	Phenomenal	Total suspension of fishing operations

Cloud distribution: (a) Isolated: <25%, Scattered:25-50%, Broken: 51-75%, Solid:>75%, Convection Intensity: (a) Weak: Cloud Top Temperature (CTT) >-25°C, (b) Moderate: CTT: - 25°C to -40°C, (c) Intense: CTT: - 41°C to -70°C and (d) Very Intense: : Less than -70°C
PROBABILITY OF CYCLOGENESIS (FORMATION OF DEPRESSION):NIL: 0%, LOW: 1-33%, , MODERATE: 34-66% AND HIGH: 67-100%
 This is a guidance Bulletin for WMO/ESCAP Panel Member countries. Visit respective National websites for Country specific Bulletins

Fishermen warning graphics

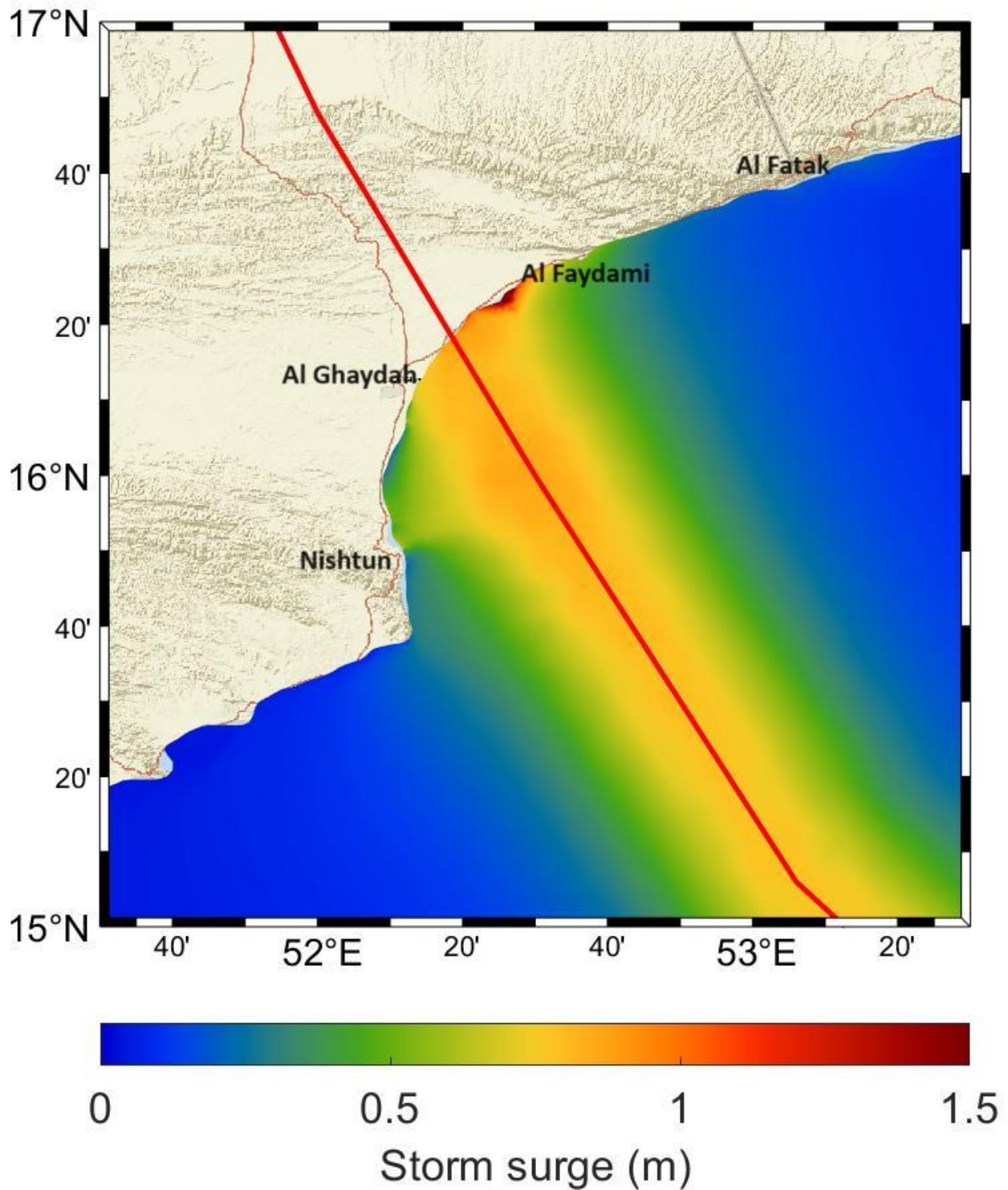


	Squally WX with wind speed 40-45 kmph gusting to 55 kmph
	Squally WX with wind speed 45-55 kmph gusting to 65 kmph
	Squally wind with speed 50-60 kmph gusting to 70 kmph
	CS with Gale wind speed 60-90 kmph gusting to 110 kmph
	SCS with Gale wind speed 90-110 kmph gusting to 120 kmph
	VSCS with Gale wind speed 110-160 kmph gusting to 175 kmph
	ESCS with Gale wind speed 160-220 kmph gusting to 240 kmph

Fishermen are advised not to venture into the marked areas.

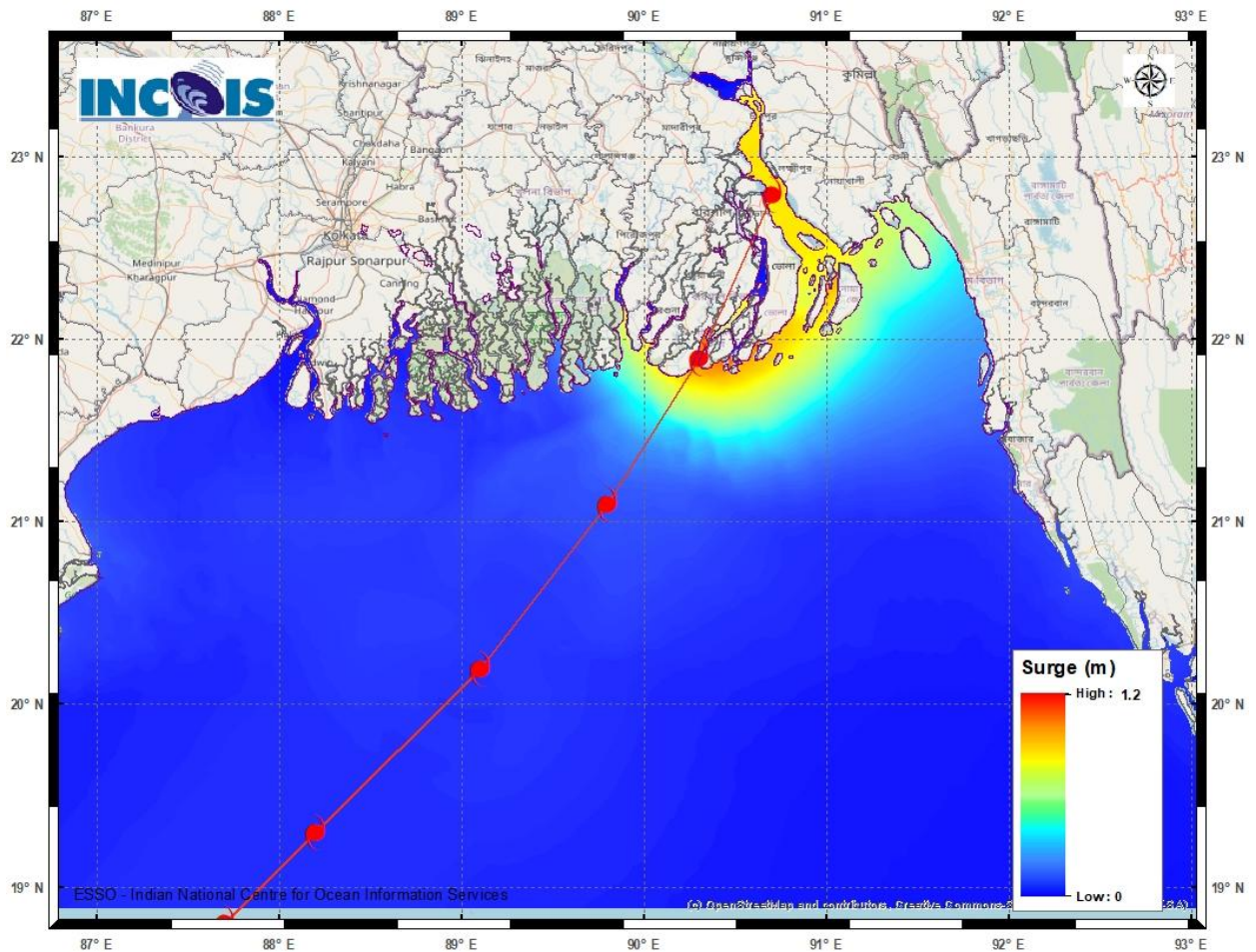
STORM SURGE GUIDANCE FOR YEMEN:

STORM SURGE OF ABOUT 2 METER HEIGHT ABOVE THE ASTRONOMICAL TIDE IS LIKELY TO INUNDATE LOW LYING AREAS BETWEEN AL GHAYDAH AND AL FAYDAMI NEAR THE LANDFALL POINT AT THE TIME OF LANDFALL.



STORM SURGE GUIDANCE FOR BANGLADESH:

STORM SURGE OF ABOUT 1.0-1.5 METRE HEIGHT ABOVE THE ASTRONOMICAL TIDE IS LIKELY TO INUNDATE LOW LYING AREAS BETWEEN KHEPUPARA AND CHITTAGONG AROUND THE TIME OF LANDFALL.



Cloud distribution: (a) Isolated: <25%, Scattered:25-50%, Broken: 51-75%, Solid:>75%, Convection Intensity: (a) Weak: Cloud Top Temperature (CTT) >-25°C, (b) Moderate: CTT: - 25°C to -40°C, (c) Intense: CTT: - 41°C to -70°C and (d) Very Intense: : Less than -70°C
PROBABILITY OF CYCLOGENESIS (FORMATION OF DEPRESSION):NIL: 0%, LOW: 1-33%, , MODERATE: 34-66% AND HIGH: 67-100%
This is a guidance Bulletin for WMO/ESCAP Panel Member countries. Visit respective National websites for Country specific Bulletins